

A close-up photograph of a woman's left arm and hand. She is wearing a black, long-sleeved, ribbed knit sweater. On her wrist, she has a wide, textured bracelet made of woven or braided material. Her hand is relaxed and slightly curled. The background is a solid, dark grey or black color.

... **MUREVA,**
a range designed
to **SIMPLIFY YOUR**
INSTALLATIONS and
SAVE YOUR TIME !

COMPLETE INFORMATION...

On internet

- > A site dedicated to the MUREVA offer
www.sarel-enclosures.com



TO CONTACT US

GREAT-BRITAIN

Sarel

Unit C
Stirling Court
Stirling Road
Swindon
SN3 4TQ

Tél. : 01793 837430
Fax : 01793 837475

SarelGB@schneider.co.uk
www.sarel.co.uk

HEADQUARTERS

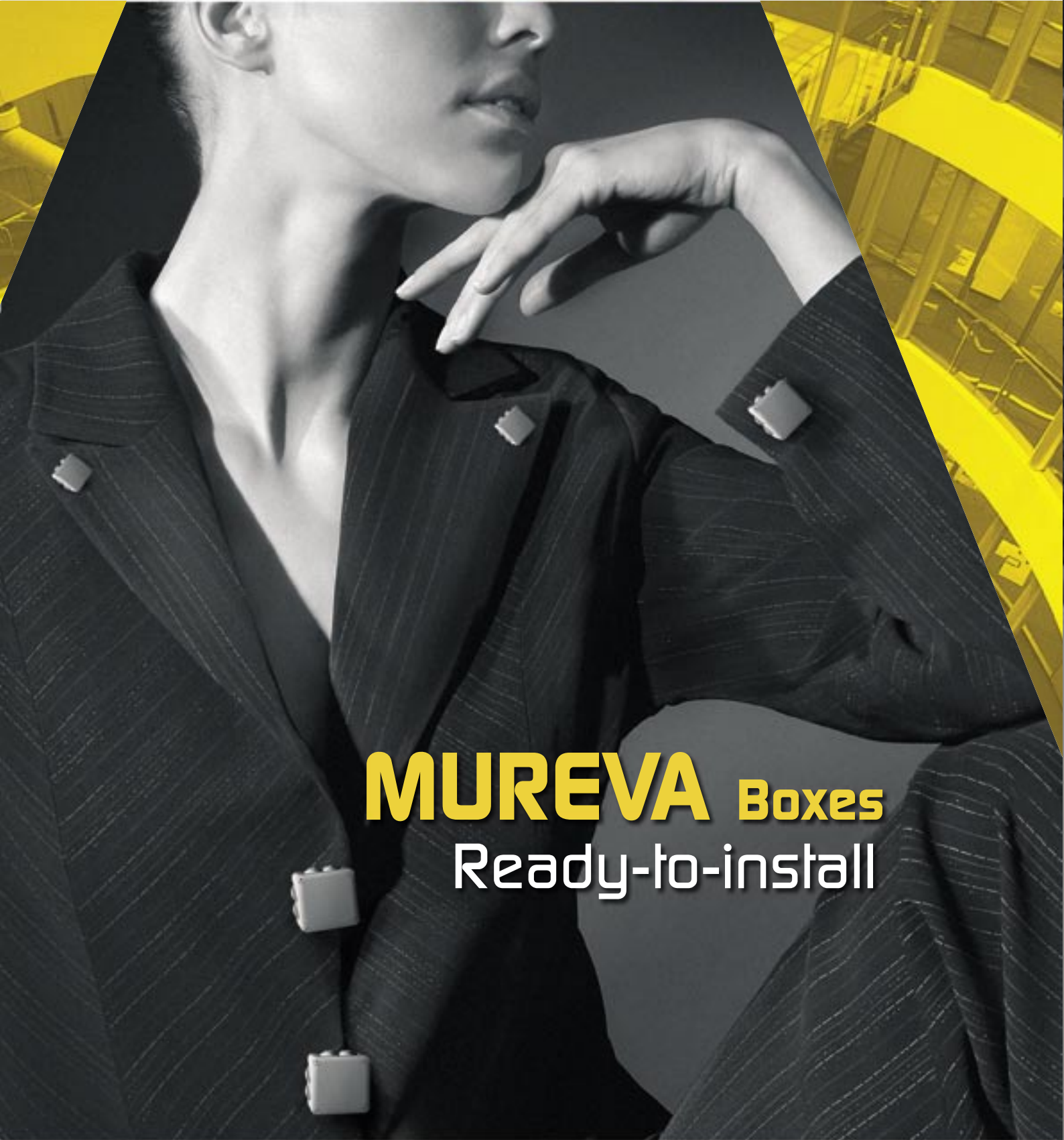
Sarel

52, route de phalsbourg
BP 106
F-67269 SARRE-UNION CEDEX

Tél. : 33 3 88 01 62 00
Fax : 33 3 88 01 63 29

fr-sarelcom@sarel.fr
www.sarel-enclosures.com

MUREVA range



MUREVA Boxes
Ready-to-install



100% inspiration throughout the range

SAREL

A new collection
for your installations...



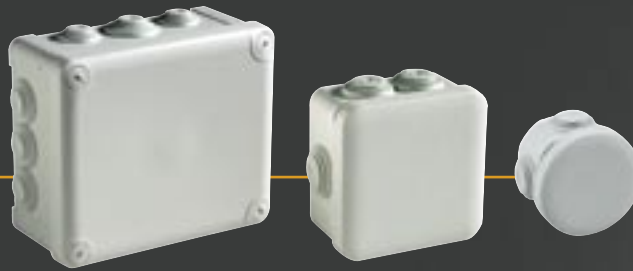
SAREL presents



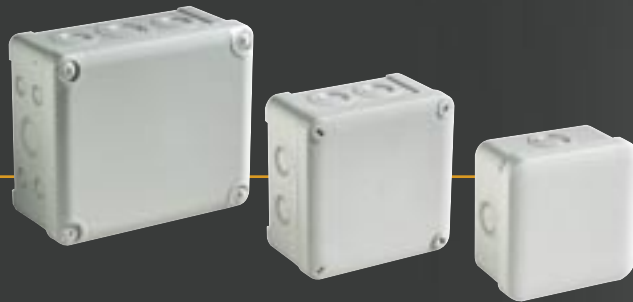
Ready-to-install MUREVA...

- A wide choice of sizes:
11 boxes from Ø 60 mm to 325 x 275 mm.
- Cable entries to suit all your requirements.

Boxes with entries



Boxes with knock-outs



960 °C boxes for safety circuits



White boxes for "clean" premises



More than 100 accessories 100 % practical!

Fixings



Fixing lug



Sheet edge clip

Cable entries



IP 55
Mixed entry EVA
+ stepped



IP 67
ISO cable
entry



IP 68
Cable gland



Ducting
connection

Terminal blocks



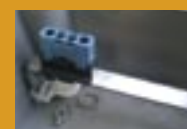
Screwless
with test zone
6 x 2,5"



4-hole
10", 16", 25"



Screw
3 x 6"



Terminal block
support bar 12 x 2 mm



Clip-in terminal block
support plate



Precut rail

Save time

on fixing

Exclusive !

- With nailer gun at one or two points, up to size 105 x 105 mm.



on cable entry

Fast and sure

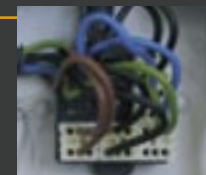
- Direct cable entry.
- Clean and simple opening.
- Valve effect: cable and tube held with total sealing.



on connection

Simple and ordered

- Terminal block support plate clips to central stud.
- Terminal blocks always perfectly aligned.
- Test zone on each terminal block.



on closing

Fast and reliable coarse-pitch 1/4-turn screw

- Captive in all situations.
- X slots, box is closed!



1/4-turn



on marking

Customised labelling

- Easily printed with the utility downloadable from www.sarel-enclosures.com



Range characteristics

- IP 55
- IK 07
- Incandescent wire 750 °C
- Class II double-insulated

"Eco-designed" range.

Certification conforming to the new European standard EN 60670.



MUREVA boxes

H mm	L mm	P mm	Grey	Grey + terminal block	White	Red Safety 960 °C
060	060	40	05001	-	05021	-
65	65	45	05002* 05032**	-	05022* 05072**	-
80	80	45	05004	05204	05024	05164
105	105	55	05005	05205	05025	05165
105	65	55	05003	-	05023	-
150	105	80	05007	-	-	05167
175	150	80	05010	-	-	-
225	175	100	05013	-	-	-
275	225	120	05017	-	-	-
325	275	120	05019	-	-	-

* 4 entries / ** 7 entries.

Terminal block supports

08241	Mounting plate
08251	Terminal block support bar 175x60mm
08252	Terminal block support bar 225x80mm
08253	Terminal block support bar 275x100mm

Fixing and association accessories

08167	Sheet edge clip
08161	Fixing lug
82502	Association kit

IP55 EVA cable entries

08121	4-20 white
08122	4-25 white
08111	4-20 clear grey
08112	4-25 clear grey
08113	4-32 clear grey
08114	4-40 clear grey

Cable gland

08071	M12
08072	M16
08073	M20
08079	M20 red
08074	M25
08075	M32
08076	M40

Terminal blocks

08242	Screwless 6x2,5 ²
08246	Screw 3x6 ²
09101	Earth terminal
08257	4-hole 2x10 ² +2x16 ² black
08259	4-hole 2x10 ² +2x16 ² blue
08255	4-hole 2x10 ² +2x16 ² green
08256	4-hole 3x16 ² +1x25 ² black
08258	4-hole 3x16 ² +1x25 ² blue
08254	4-hole 3x16 ² +1x25 ² green

IP67 ISO cable entries

08831	M12
08832	M16
08833	M20
08834	M25
08835	M32
08836	M40
08837	M50

Cable ducting connection

08156	grey 80mm
08157	grey 105mm
08158	white 80mm
08159	white 105mm

When ordering in the UK please add the prefix ENN to the reference number